



KEYKEEPER

  
**KEYKEEPER**  
DER SCHLÜSSEL-MANAGER  
2018/2019



EVERYDAY CARS  
FOR EVERYONE







# RY

*„We are still eagerly following how a supposedly small idea from the year 2015 had picked up speed that quickly. It makes me very proud that the principle of KEYKEEPA® has tens of thousands supporters now and grows further even across the borders of Europe“*

*- Dennis Klüsekamp (CEO)*

# KEYKEEPER<sup>®</sup>

DER SCHLÜSSEL-MANAGER



## KEYKEEPER<sup>®</sup>

The classic KEYKEEPER<sup>®</sup> masters the stowage of many keys in the smallest possible space!



1-12 keys  
or tools



loop for  
car key



bottle  
opener



## KEYKEEPER<sup>®</sup> LOOP

The KEYKEEPER<sup>®</sup> Loop is the noble alternative for all those who own fewer keys.



1-7 keys  
or tools



loop for  
car key



shopping cart  
chip

Available in: *leather, aluminium, stainless steel*

Available in: *leather*







# The world's most unique!

The KEYKEEPER® leather series is probably the most valuable and elegant solution on the key organizer market.

KEYKEEPER

CAPPUCCINO



# KEYKEEPER® LEATHER



RACE RED



SWEET ROSÈ



MOCCA

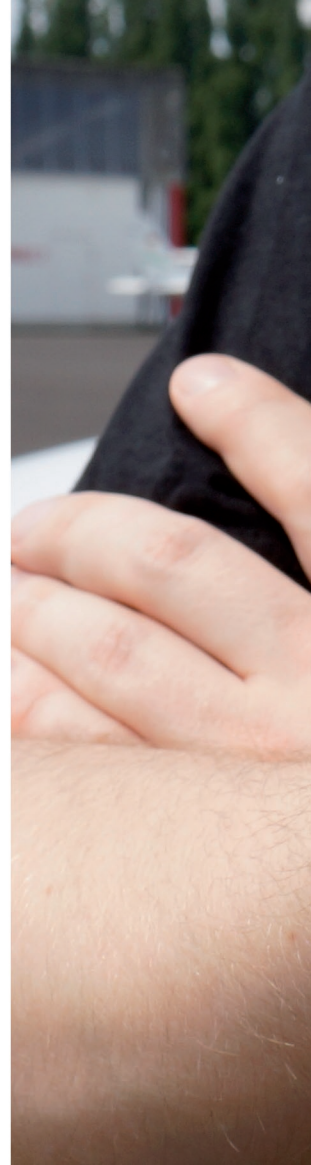


PHANTOM BLACK

*\*figure contains additional add-ons (e.g. shopping cart chip)*

# Stays in shape

Despite many individual tools the loop keeps it slim.





skatemore®



# Handmade in Germany

When it comes to our leather products we profit from close cooperations with experienced leather manufactures from the surrounding area.



RACE RED



# KEYKEEPA® LOOP



SWEET ROSÉ



MOCCA



PHANTOM BLACK



CAPPUCCINO





# KEYKEEPA® WOOD



WENGE



BLACK CHERRY



WALNUT



ZEBBRANO

## A small piece of nature

The KEYKEEPA® Wood edition is our most unique series. Every model is individual through the natural grain of the wood.



**MADE IN GERMANY**







# The classics

A huge selection of top notch metals building the basis of our assortment.





# KEYKEEPER<sup>®</sup> CLASSIC



CLASSIC BLACK



CLASSIC STEEL



CLASSIC RED



CLASSIC BLUE



CLASSIC GREEN



CLASSIC PURPLE

# Did you know...?

... that our customers use their KEYKEEPA® approximately 8 times a day? That makes 2.920 uses per year.

In order to resist daily exposures, a careful choice of high quality material is our utmost concern.









# Extremely limited

Every season young aspiring  
artist from our area supply new  
limited KEYKEEPA® designs.



# KEYKEEPER<sup>®</sup> DESIGN



FLAMINGO



CAMOUFLAGE

Organization is half the battle.





# KEYKEEPER<sup>®</sup> TOOLS



FRIES FORK



FLASH DRIVE



SHOPPING CART CHIP (WITH BOTTLE OPENER)



BEARD COMB



PHILLIPS SCREWDRIVER



SLOT SCREWDRIVER





# Design meets function

Individualize your KEYKEEPER® to suit your needs.

# KEYKEEPER<sup>®</sup> LOOP

6 KEYS +  
SHOPPING CART CHIP



1 KEY +  
SHOPPING CART CHIP





# KEYKEEPER® CLASSIC

12 KEYS +  
BOTTLE OPENER & LOOP



2 KEYS +  
BOTTLE OPENER & LOOP







# Social and regional

The last step of our production process is the assembly of the final product. Since our founding we receive the help of a local sheltered workshop located in Altenbochum.

We are happy to see how much commitment and heart our team puts in every single piece.



**REVIER**  
— MANUFAKTUR —

[www.keykeepa.de](http://www.keykeepa.de)  
[www.facebook.de/keykeepa](https://www.facebook.de/keykeepa)  
[www.instagram.com/keykeepa](https://www.instagram.com/keykeepa)

Reviermanufaktur GmbH  
Hennigfeldstrasse 7 - 44795 Bochum  
Tel: +49 234 459303-70  
[www.reviermanufaktur.de](http://www.reviermanufaktur.de)